

For your most challenging materials and applications.

Blasomill GT X



Dominik Schlup and Benjamin Roth
Product Management and Process Engineering
Blaser Swisslube

Our Liquid Tool. Your Success.

Performance-optimized formulations for unmatched efficiency and precision.

Blasomill GT X

- Enable high feed rates, reduced tool wear and excellent surface quality
- Good machine/polymer compatibility and filterability
- For demanding materials such as titanium, nickel alloys and high-alloy steels
- For individually filled machines and central systems

Gas-to-liquid technology (GTL)

Comprehensive range of tried-and-tested high-performance oils

- Maximum efficacy of additives thanks to high-purity base oil
- Lower top-up rates and longer sump life thanks to thermal stability and low evaporation tendency
- Minimized mist and smoke for a pleasant working environment

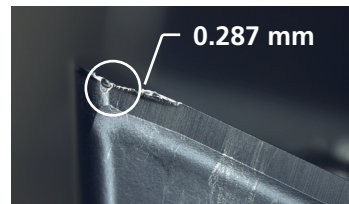
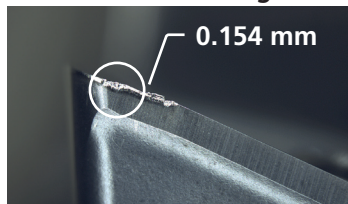
Lower tool costs per part

Standard milling test in our inhouse technology center

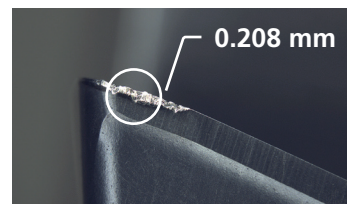
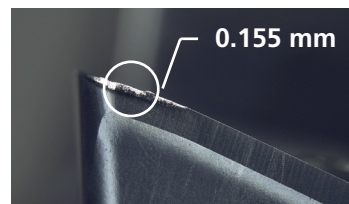
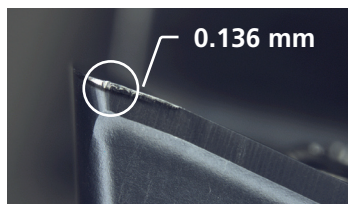
Parameter [mm] Inconel: ap 2, ae 1, fz 0.05

Maximum tool wear 0.2 mm

Conventional cutting oil



Blasomill GT 16 X



8 m

10 m

14 m

Product data	GT 8 X	GT 16 X
Viscosity at 40°C	8 mm ² /s	16 mm ² /s
Flash point	160°C	201°C
Copper corrosivity 3h at 60°C	1a	1b
Ester content	6%	14%



Test us. It's worth it.

blaser.com/blasomillgtx



Our Liquid Tool. Your Success.