

# Get the most out of your metalworking fluid.

With our modular automation solutions



**Rolf Schneider**  
Head of Team Product  
Management Services  
Blaser Swisslube AG

**Simon Baumgartner**  
Project Manager  
Liechti Engineering AG

Our Liquid Tool. Your Success.

# The right metalworking fluid, correctly monitored and maintained, has a positive effect on all aspects of your production.

## Fully automatic coolant management

The AutoPilot from Liquidtool\* monitors concentration, temperature and sump level of each connected machine and tops up each tank individually and continuously with the exact concentration and quantity. All data and actions are recorded in the Liquidtool Manager, giving you an overview of all machines at all times.

## Modular system for all needs

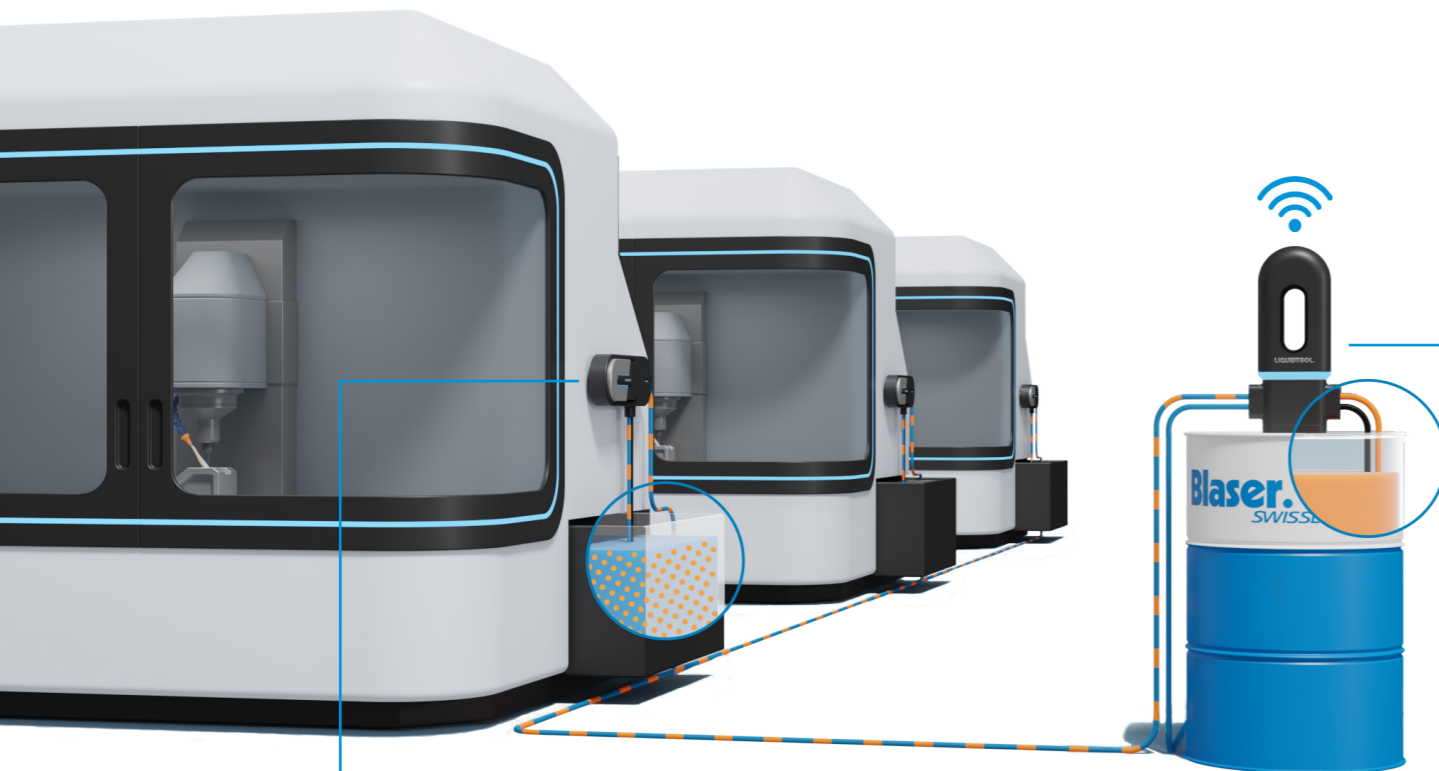
No matter what type and number of machines you have, or what kind of monitoring and automation you envision. We have a solution for your needs – from purely automatic monitoring to fully automatic addition for central systems.

## Maintain the performance and stability of your metalworking fluid

Continuous top up ensures that the concentration always corresponds to the target value.

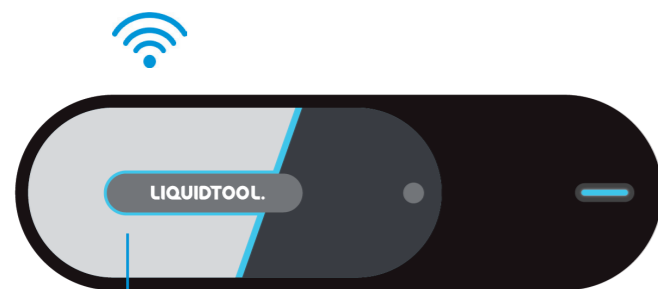
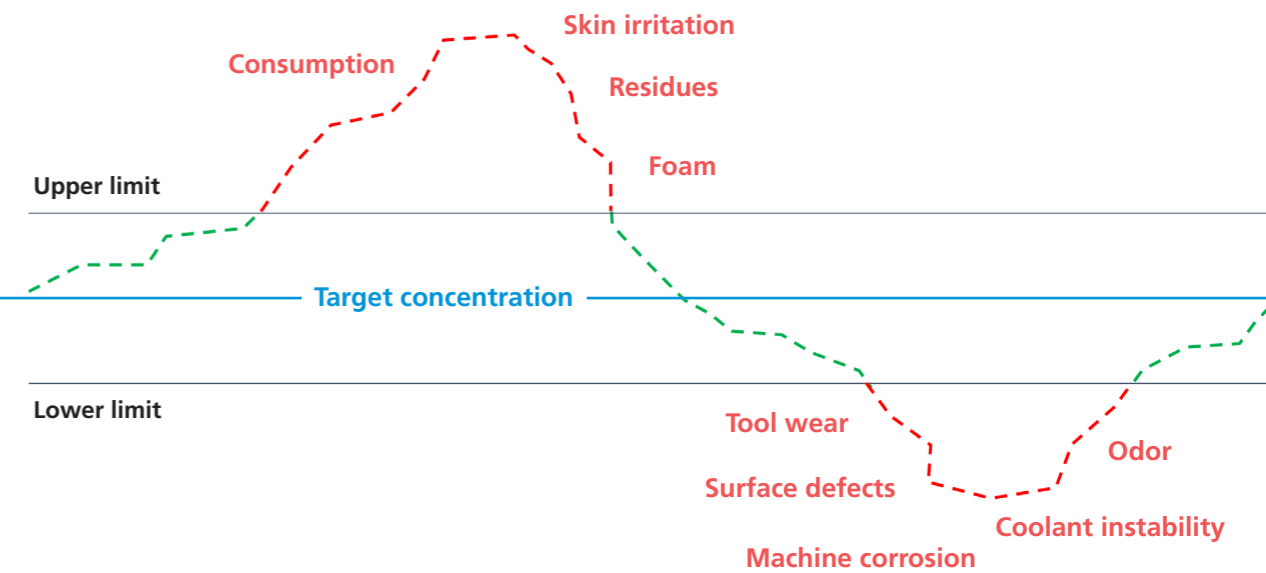
This has a sustainable effect on all aspects of your production:

- Stable processes
- High workpiece quality and machine availability
- Shorter cycle times
- Long tool and sump life



### SmartFiller

- Measures fill level of the concentrate and mixes the correct concentration.
- Tops up each coolant tank individually via Extender.



### Sensor

- Ensures constant concentration through automatic monitoring.
- Available separately as pure monitoring solution (Liquidtool Instructor).

### Extender

- Guarantees a full tank thanks to automatic level measurement.
- Is directly connected to the SmartFiller and measures flow during top up.



### Manager

- Ensures overview and control of all machines.
- Analyzes data in real time and directly triggers required actions.

- Careful use of resources – up to 40% reduction in coolant consumption
- Minimized maintenance efforts
- Fewer absences thanks to safe working environment and satisfied employees
- Lower overall costs per produced workpiece



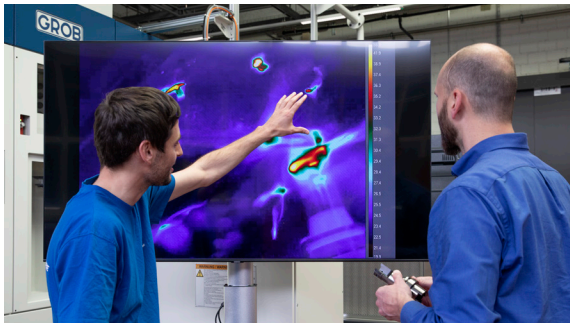
\* Liquidtool Systems is a sister company of Blaser Swisslube.

# Benefit from our knowledge and experience.

Decades of machining experience have taught us there are complex correlations between chemistry and mechanics. Make the most of our knowledge to optimize your processes, keep them stable and quickly resolve issues.

## Comprehensive services

- Consulting on machining, process management and sustainability
- Simulation and optimization of your processes in our technology center
- Customized Fluid Management (CFM) – lubricant management that is individually tailored to you
- Regular analysis of your metalworking fluid samples in our laboratories
- Support in case of questions about chemistry and microbiology



In-house technology center with state-of-the-art machines and measuring devices



Global and local laboratories with more than 70 staff in the fields of chemistry, microbiology, and laboratory technology



## Your machining expert is here for you

- Introduction of automation solutions including support with the evaluation and use of data
- Regular review and implementation of further improvement measures

## Benefit from our unique Liquid Tool™

With our profound know-how and experience, customized services and excellent products, we help you fully capitalize on the potential of your machines and tools and turn your metalworking fluid into a key success factor – a Liquid Tool.

**Test us. It's worth it.**

**[blaser.com/automation](https://blaser.com/automation)**



**Our Liquid Tool. Your Success.**